

STATE OF SOCIAL WORK

REPORT 2024



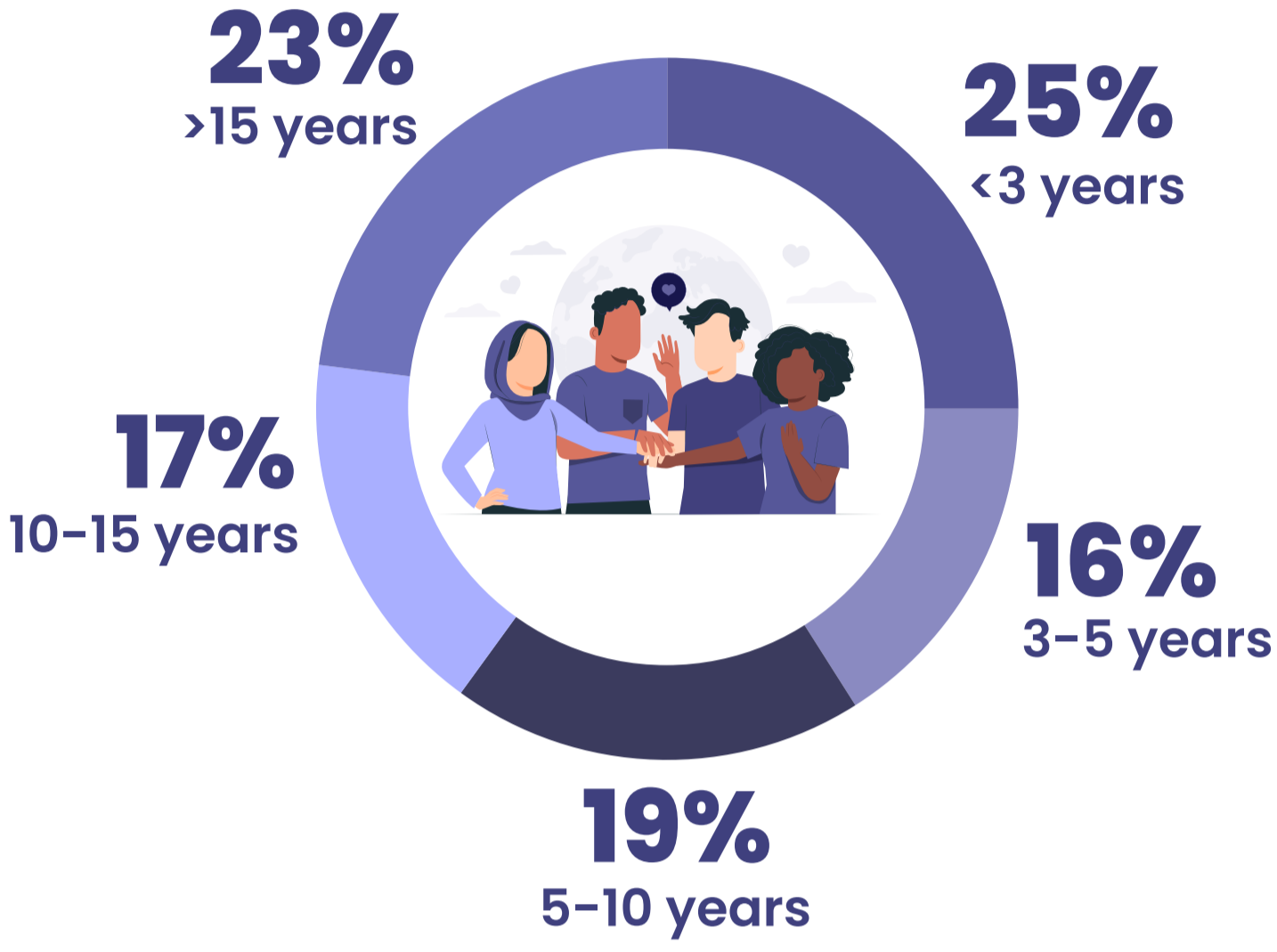
DETAILS ABOUT THE SURVEY POPULATION

Responses were collected from 12/16/23 to 12/22/23. The survey was promoted to the Agents of Change subscriber list and via social media (Facebook, Instagram, LinkedIn) on both Agents of Change and non-Agents of Change groups.

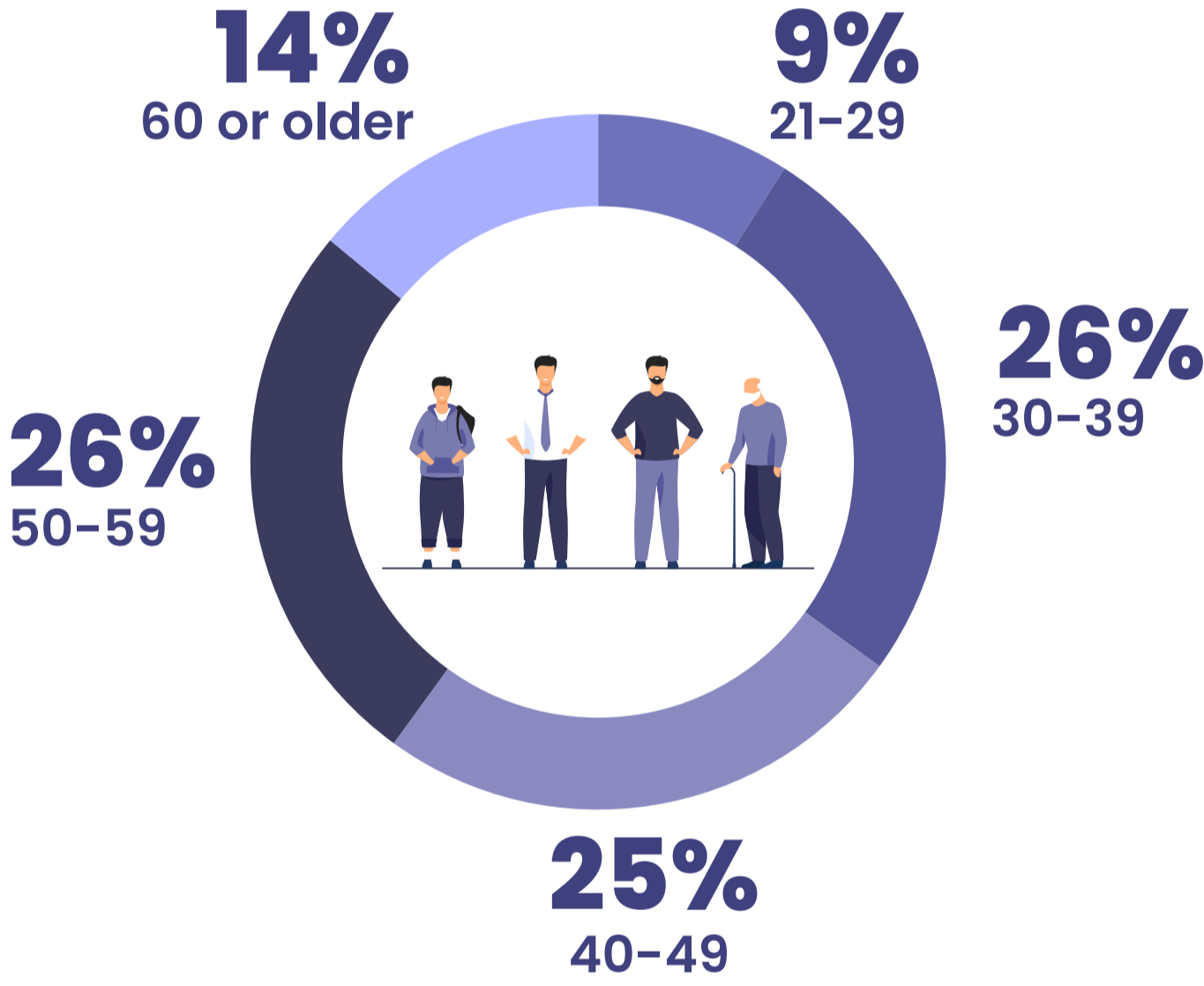


270 SOCIAL WORKERS RESPONDED

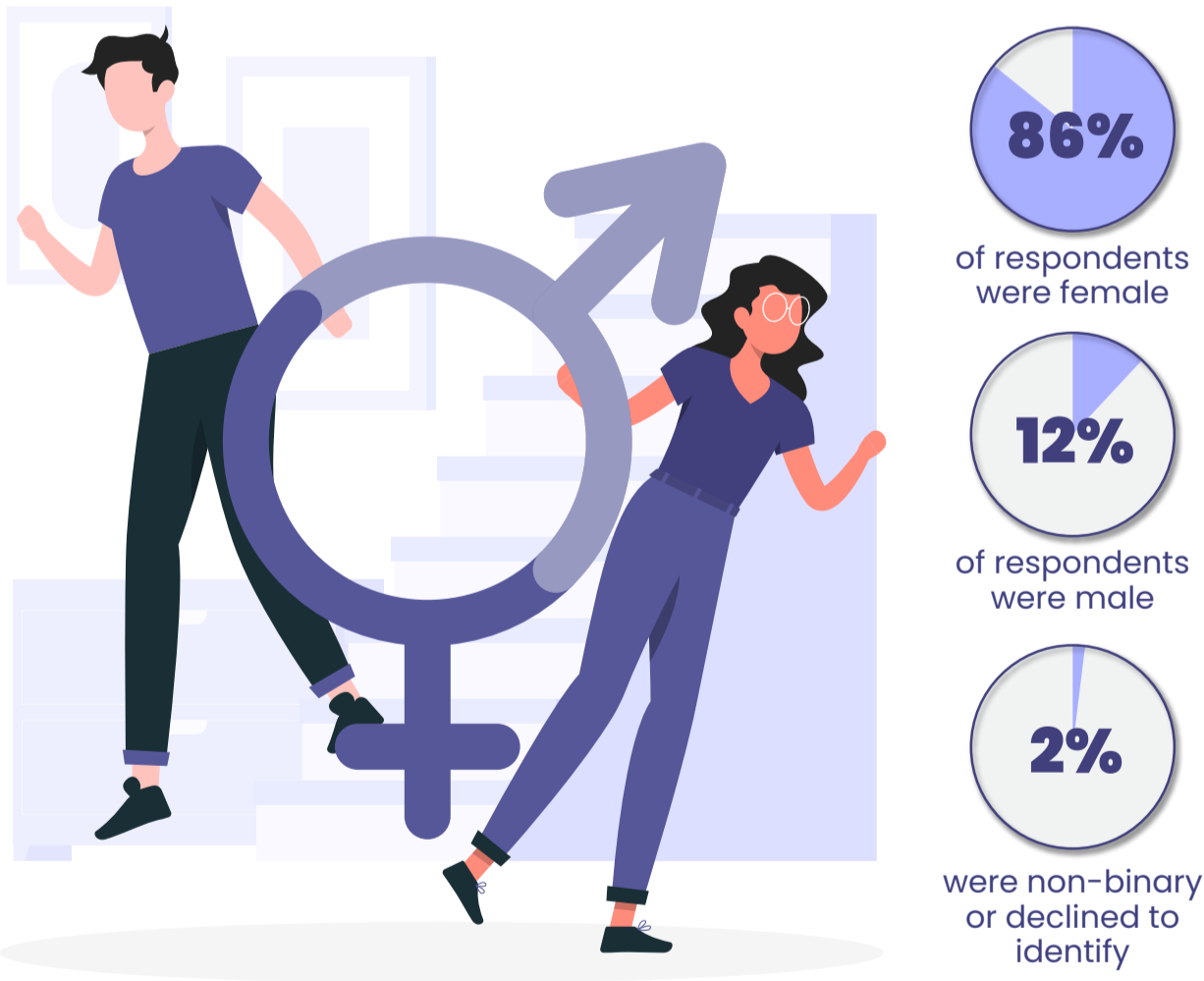
RESPONDENTS HAD A DIVERSE LEVEL OF EXPERIENCE IN SOCIAL WORK



RESPONDENTS HAD DIVERSE AGE REPRESENTATION



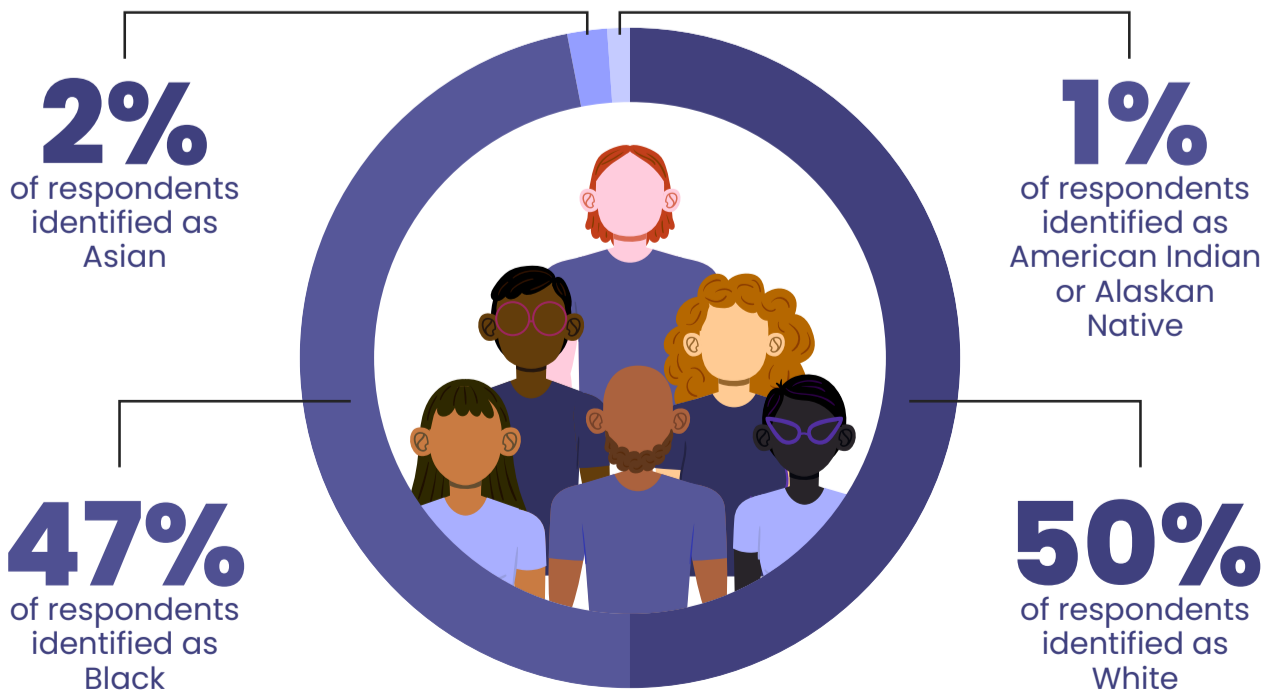
GENDER DISTRIBUTION



13%

of respondents identified as Mexican, Mexican-American, Chicano, Puerto Rican, Cuban, Cuban-American, or a member of some other Spanish, Hispanic, or another Latino group

RACE IDENTIFICATION



44 states+

the District of Columbia were represented by respondents



84%

of respondents are currently employed as a social worker

FINDINGS ABOUT THE ASWB EXAM AND LICENSING



64% of respondents are currently studying for an ASWB exam

Of these, **53%** are studying to take the Masters exam and **45%** studying to take the Clinical Exam. **2%** are studying for the Bachelors exam

WHAT IS THE PRIMARY REASON YOU ARE TAKING THIS EXAM?



37% taking exam to "Acquire a Valuable Credential"



12% "Required for a Job They Are Applying For"



10% "Required for Current Job"



10% "To Build Skills as a Social Worker"

WHAT CHANGES DID RESPONDENTS WANT TO SEE IN THE ASWB EXAM IN THE FUTURE?



Improved Exam Structure and Content



Better Support and Resources



Increase Accessibility and Inclusivity



Improve Testing Conditions and Environment



Reduce Licensing Process and Costs



FINDINGS ABOUT

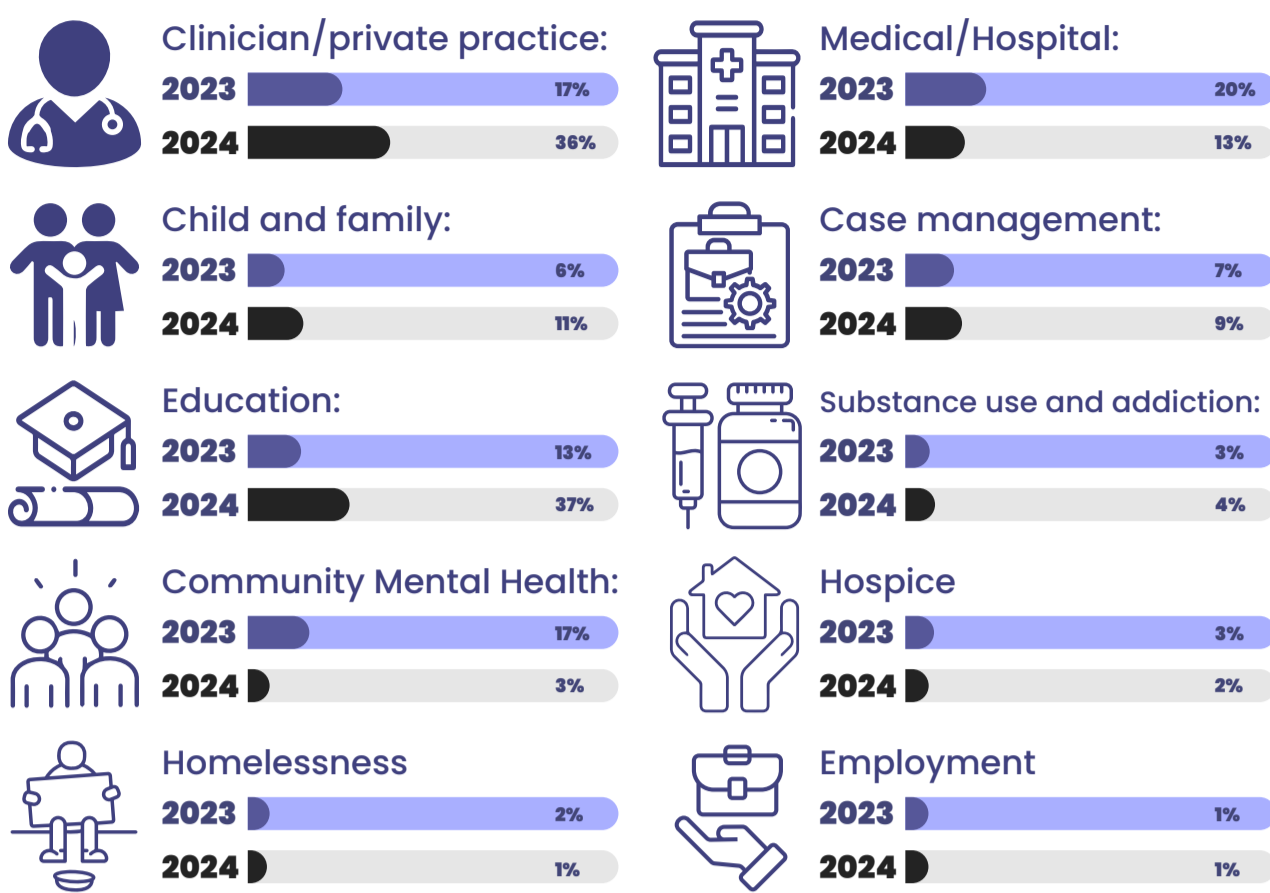
SOCIAL WORKER CAREERS



SOCIAL WORK IS INCREDIBLY DIVERSE!

216 different types of social work careers were mentioned by respondents!

TOP 10 CATEGORIES OF SOCIAL WORK REPRESENTED:



JOB CHANGES



39%

of respondents were either "somewhat likely" or "highly likely" to change their jobs in the next 12 months

FOR THOSE WHO PLANNED TO CHANGE JOBS:



61% plan to change to earn a higher salary



17% plan to change to a role with lower levels of stress



7% plan to change to find more flexibility in work hours

OF THE TOP 10 TYPES OF SOCIAL WORK REPRESENTED, THE 3 MOST LIKELY TO WANT TO CHANGE JOBS WERE:



Community Mental Health reported being very or somewhat likely to change jobs



Substance Use and Addiction reported being very or somewhat likely to change jobs



Child and Family reported being very or somewhat likely to change jobs



OF THE TOP 10 TYPES OF SOCIAL WORK REPRESENTED, THE 3 LEAST LIKELY TO WANT TO CHANGE JOBS WERE:

Medical/Hospital reported being very or somewhat likely to change jobs



Hospice reported being very or somewhat likely to change jobs



Education reported being very or somewhat likely to change jobs



OF THE TOP 10 TYPES OF SOCIAL WORK REPRESENTED, THE 3 JOBS WITH THE HIGHEST REPORTED STRESS LEVELS WERE:



Community Mental Health reported very or somewhat high stress



Substance Use and Addiction reported very or somewhat high stress



Child and Family reported very or somewhat high stress



OF THE TOP 10 TYPES OF SOCIAL WORK REPRESENTED, THE 3 JOBS WITH THE LOWEST REPORTED STRESS LEVELS WERE:

Hospice reported very or somewhat high stress



Education reported very or somewhat high stress



Medical/Hospital reported very or somewhat high stress



FINDINGS ABOUT THE

FUTURE OF SOCIAL WORK



64%

are either "Very Positive" or "Somewhat Positive" about the future of social work
21% of people are neutral

THE LEVEL OF POSITIVITY VARIES DRAMATICALLY BY HOW LONG THE RESPONDENT HAS BEEN A SOCIAL WORKER. THE % OF EACH GROUP REPORTING THAT THEY ARE "SOMEWHAT POSITIVE" OR "VERY POSITIVE" ABOUT THE FUTURE OF SOCIAL WORK:



OF THE SOMEWHAT POSITIVE OR VERY POSITIVE RESPONDENTS, THEY FEEL THIS WAY BECAUSE:



Growing
Need and
Importance of
Social Workers



Opportunities
for Growth



Recognition
and Value of
the Profession



Impact and
Fulfillment



Evolving
Nature of
Profession and
Advocacy

OF THE SOMEWHAT NEGATIVE OR VERY NEGATIVE RESPONDENTS, THEY FEEL THIS WAY BECAUSE:



Lack of
Support and
Appreciation



Licensing and
Examination
Challenges



Overwork and
Underpayment



Professional
Culture and
Training Issues



Systemic and
Ethical
Concerns

FINDINGS ABOUT THE FUTURE OF SOCIAL WORK

53% are "Neutral" about AI and its potential on Social Work

+ **21%** are "Very Positive" or "Somewhat Positive"

- **26%** are "Very Negative" or "Somewhat Negative"

OF THE SOMEWHAT POSITIVE OR VERY POSITIVE RESPONDENTS, THEY FEEL THIS WAY BECAUSE:

- Increased Efficiency in Administrative Tasks
- Enhanced Resource Utilization
- Support in Research and Information Gathering
- Educational and Training Aid
- Innovation and Adaptation to Modern Challenges



OF THE SOMEWHAT NEGATIVE OR VERY NEGATIVE RESPONDENTS, THEY FEEL THIS WAY BECAUSE:



- Worry About AI Being Used Inappropriately
- Skepticism about AI's Capabilities
- Lack of Familiarity or Understanding
- Concerns about Job Competition and Skill Loss
- Uncertainty and Openness to Future Possibilities

AGENTS OF CHANGE

SOCIAL WORK TEST PREP

www.agentsofchangeprep.com

© 2024 Agents of Change LLC